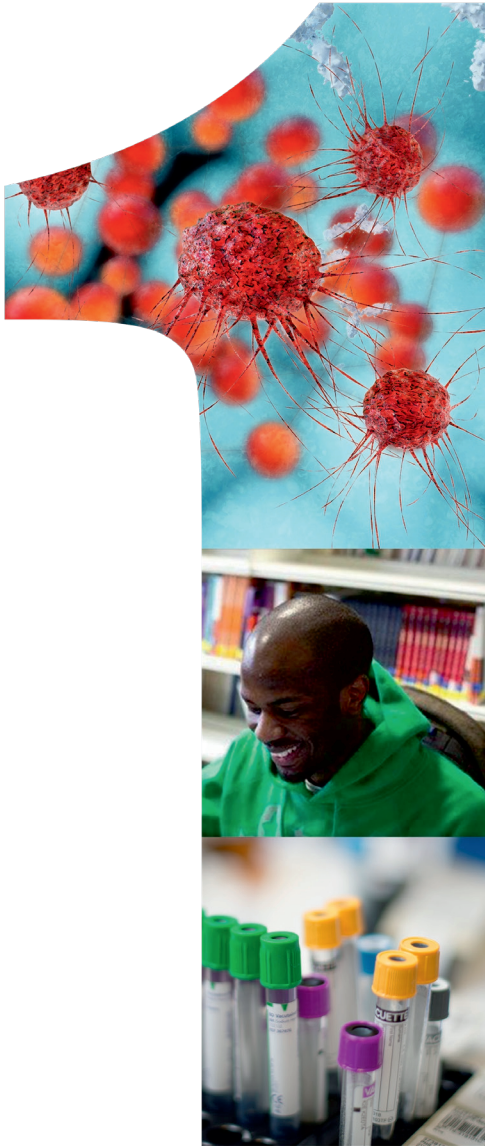
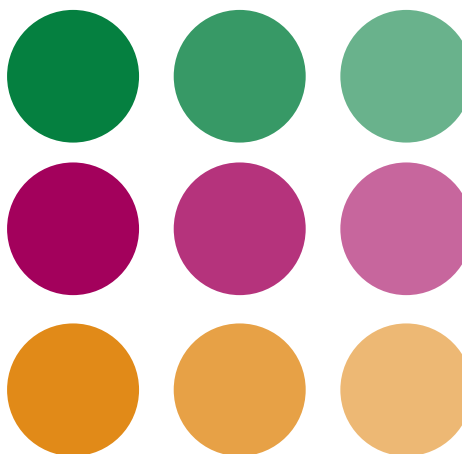


# King's Health Partners Annual Conference 2019



 **years of innovation,  
transformation  
and impact**

## 10 year anniversary messages

I congratulate King's Health Partners on their 10th anniversary as a Department of Health and Social Care Academic Health Sciences Centre (AHSC). Significant progress to align the NHS and academic partners has seen a transformation of health and care delivery in south east London. Over the years, the establishment of the Clinical Academic Groups has underpinned substantial research funding investments, enabling the engine of world-class excellence in health research to be coupled with academic expertise in medical education and training.

Through this strategic alignment of the partners, real progress has been made and the AHSC is working across all its programmes to get the best outcomes for the local population.

**Professor Chris Whitty, Chief Scientific Adviser, Department of Health and Social Care**

I am a strong advocate of Academic Health Sciences Centres – bringing together the NHS, National Institute for Health Research (NIHR) Biomedical Research Centres and universities helps us get the best research for patients.

The best research in the world is of limited value unless you can put it into practice. This type of partnership brings together the brightest minds to offer patients the very best care and treatment, based on quality evidence.

The world looks on in envy at the collaboration achieved at King's Health Partners – congratulations on your 10 year anniversary and I look forward to seeing even more success going forward.

**Professor Dame Sally Davies, Chief Medical Officer, England**

@kingshealth

Impact

#KHP10Years

# 10 impactful stats



@kingshealth

Impact

#KHP10Years

# Agenda

## King's Health Partners Annual Conference 2019

Time	Morning	Speaker
8:15	Breakfast and stalls	
9:00	Welcome – King's Health Partners at 10	Prof Sir Robert Lechler
9:25	<b>Impact 7x7</b> <ul style="list-style-type: none"> <li>• Prof Sally Barrington – using PET/CT to treat Hodgkin lymphoma</li> <li>• Prof Sir John Strang – Naloxone without the needle</li> <li>• Prof Andrew Tutt – first targeted treatment for hereditary cancer</li> <li>• Prof Philip McGuire – uncovering the link between cannabis and psychosis</li> <li>• Prof Lucy Chappell – changing antenatal care with pre-eclampsia research</li> <li>• Prof Reza Razavi – advances in MRI-guided electrophysiology</li> <li>• Prof Sir Robert Lechler – transplantation tolerance: adoptive T Cell therapy</li> </ul>	Prof Sir Robert Lechler  Seven, seven-minute talks on translational research that has impacted patient care
10:25	Introduction – Sir Hugh Taylor, Chair, Guy's and St Thomas' and King's College Hospital NHS Foundation Trusts	
10:30	The impact and contribution of AHSCs – life sciences and the long-term sustainability of healthcare	<b>Keynote speaker:</b> Rt Hon Prof Lord Kakkar
10:50	Mind & Body – how the nervous and immune systems interact and influence inflammatory and psychiatric disease	Dr Valeria Mondelli & Prof Leonie Taams
11:10	Questions from the audience for speakers	
<b>11:20</b>	<b>Coffee</b>	
11:35	Introduction – Kieron Boyle, Chief Executive, Guy's and St Thomas' Charity	

[@kingshealth](https://twitter.com/kingshealth)
[Impact](#)
[#KHP10Years](#)

<b>Time</b>	<b>Morning</b>	<b>Speaker</b>	
11:40	Prevention, AHSCs and the NHS Long Term Plan	<b>Keynote speaker:</b> Prof Yvonne Doyle CB	
12:00	The future of population health	Prof Kenji Shibuya	
12:20	Introduction – June Mulroy, Interim Chair, South London and Maudsley NHS Foundation Trust		
12:25	Women and Children’s Health – better beginnings, healthy lives	Prof David Edwards & Prof Karen Edmond	
12:45	The Vital 5	Prof John Moxham	
13:00	Questions from audience for speakers		
<b>13:15</b>	<b>Lunch</b>		
<b>Time</b>	<b>Afternoon</b>		
14:00	Workshops		
<b>14:00 - 14:45</b>	<b>King’s Health Partners</b> Help shape our vision and ambition for 2024	<b>Mind &amp; Body</b> Introduction to integrating mental and physical healthcare	<b>Implementing the Vital 5 in primary care</b> Clinical Effectiveness Southwark approach
14:45	<b>Coffee</b>		
<b>15:00 - 15:45</b>	<b>Value Based Healthcare</b> Outcomes across pathways of care: measuring what matters	<b>Mind &amp; Body</b> Reflecting on our first year of Mind & Body Champions	<b>Vital 5 - the Silent Years</b> Identifying opportunities and exploring pilots

[@kingshealth](#)
[Impact](#)
[#KHP10Years](#)

# 2018 – 2019 highlights

We published 70 examples of key achievements from our Clinical Academic Groups to celebrate 70 years of the NHS.

We received the world's largest grant for autism, €115 million, to form one of the biggest research academic-industry collaboration projects to find new methods for the development of drugs for autism spectrum disorder.

Integrating Care: Depression, Anxiety and Physical Illness online learning launched with more than 5,000 people signing up.

Joint Adult Haematology Referral Guide developed to support GPs in referring patients for blood disorder care.



£2.3 million awarded to lead a new multi-centre trial to treat liver disease.

London South Genomic Laboratory Hub launched, transforming genetic testing for people in south east England.

May

Healthcare leaders from the Zealand region of Denmark visit King's Health Partners to learn how we're bringing research, education and clinical care together for the benefit of patients.

Jun

70

Palliative Care Clinical Academic Group publish their outcomes book.

Jul

€26.8 million in funding secured to support diabetes research.

King's Health Partners continue to lead clinical research in south east London.

Aug



Five teams shortlisted for Health Service Journal Awards.

Sep

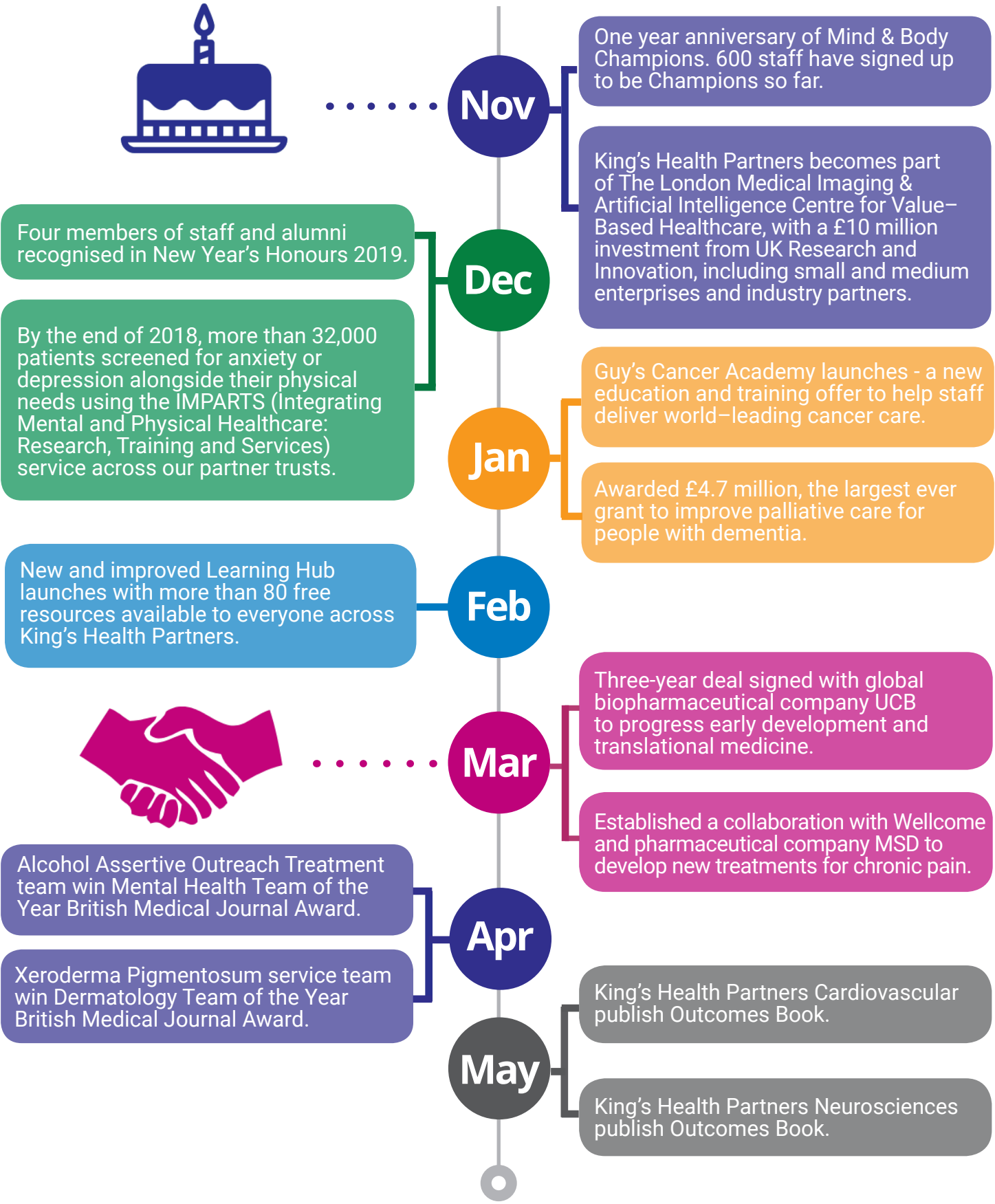
King's Health Partners becomes part of Cancer Research UK City of London Centre, with £14 million investment from Cancer Research UK.

Oct

@kingshealth

Impact

#KHP10Years



@kingshealth

Impact

#KHP10Years

# Our Academic Health Sciences Centre leadership

## Prof Ed Byrne, President and Principal, King's College London



Professor Ed Byrne became President and Principal at King's College London on 1 August 2014. He joined King's College London from Monash University, the largest university in Australia, where he was President and Vice-Chancellor.

Professor Byrne is a neuroscientist and clinician by background. He held the positions of Executive Dean of the Faculty of Biomedical Sciences, Head of the Medical School and Vice Provost at UCL. He has honorary professorships from UCL, Warwick University and Peking University, and Honorary Degrees from the University of Adelaide, Warwick University and Western University. He is a fellow of the Australian Academy of Science and Technology and the Australian Academy of Health and Medicine and is a fellow of the American Academy of Neurology and the American Neurological Association. Professor Byrne was admitted as an Officer of the Order of Australia in 2006 and a Companion of the Order of Australia, Australia's highest honour in 2014.

## Prof Sir Robert Lecher, Executive Director, King's Health Partners



Robert is Executive Director of King's Health Partners. Working with the Board and Executive Board, he sets the direction and focus of the partnership. He is also Senior Vice President/Provost (Health) at King's College London.

Robert qualified in medicine in 1975 and completed his PhD in transplantation immunology at the Royal Postgraduate Medical School. He completed his scientific training at the National Institutes of Health in Bethesda in the USA and returned to the UK to a Senior Lecturer Post at the Royal Postgraduate Medical School in 1986 and became Head of the Department of Immunology in 1994. He moved to King's College London as Head of the School of Medicine in September 2004 and was appointed Vice Principal (Health) in October 2005. In 2009, he became Executive Director for King's Health Partners and in 2012 received a knighthood in the Queen's Birthday Honours for services to academic medicine. In 2015 he became the President of the Academy of Medical Sciences.

## Robin McIver, Deputy Vice Principal of Strategy, Planning and Analytics, King's College London



Robin is Deputy Vice Principal for Strategy, Planning and Analytics at King's College London. He reports to the President and Principal and supports the development and delivery of strategy including King's Strategic Vision 2029, as well as leading the Business Planning, Transformation and Analytics functions of the University.

Robin has worked at King's College London since 2011 and previously spent 12 years in management consulting, working for a range of clients in London and New York.

## Jill Lockett, Executive Director of Performance and Delivery, King's Health Partners



Jill is Executive Director of Performance and Delivery at King's Health Partners.

Before this Jill was Service Director for the Behavioural and Developmental Psychiatry Clinical Academic Group within South London and Maudsley NHS Foundation Trust. Previously, she was Director of Cancer Waits and Heart Team Capital Programme at the Department of Health and Director of Commissioning in a London Primary Care Trust.

@kingshealth

Impact

#KHP10Years



## Our Academic Health Sciences Centre leadership

### June Mulroy, Interim Chair, South London and Maudsley NHS Foundation Trust



June was appointed Interim Chair of South London and Maudsley NHS Foundation Trust in May 2019. She joined the Trust in January 2015 as Deputy Chair. She is a chartered accountant with more than 35 years of experience including at board level in private and public sectors in the UK and overseas.

June's working experience has been principally in financial services in UK, Switzerland, Ireland and France. There have also been substantial projects in the NHS and in UNESCO (Paris). Her seven-year appointment as an executive director in the Pensions Regulator where she was tasked with changing UK Pensions Policy and Regulation, resulted in her being awarded an MBE.

### Dr Matthew Patrick, Chief Executive, South London and Maudsley NHS Foundation Trust



Dr Matthew Patrick was appointed Chief Executive of South London and Maudsley NHS Foundation Trust in October 2013. Matthew trained as an adult psychiatrist at the Maudsley and Bethlem Royal Hospitals and for many years combined clinical work and developmental research. Over the past five years he has contributed to national mental health policy and strategy, including the development of the Improving Access to Psychological Therapies (IAPT) programme; the development of the New Horizons mental health policy and the government's Mental Health Strategy, 'No Health Without Mental Health'. More recently he has led on work around the development of e-mental health and has been actively involved in the development of mental health within Academic Health Sciences Centres.

### Amanda Pritchard, Chief Executive, Guy's and St Thomas' NHS Foundation Trust



Amanda Pritchard was appointed as Chief Executive of Guy's and St Thomas' NHS Foundation Trust in January 2016, having been Acting Chief Executive since October 2015. Prior to that she served as Chief Operating Officer at the Trust for three and a half years.

Previously Amanda was at Chelsea and Westminster NHS Foundation Trust where she spent six years as Deputy Chief Executive. Amanda spent 10 months leading the health team in the Prime Minister's Delivery Unit in 2006 and has also held a number of other NHS management positions.

### Dr Clive Kay, Chief Executive, King's College Hospital NHS Foundation Trust



Dr Clive Kay joined King's College Hospital NHS Foundation Trust as Chief Executive in April 2019. Clive has extensive clinical and leadership experience, and prior to taking up his position at the Trust he was Chief Executive at Bradford Teaching Hospitals NHS Foundation Trust from January 2015.

Previously he was Clinical Director of Radiology (2001-2006) and subsequently the Medical Director (2006-2014) at Bradford. Prior to working at Bradford, Clive was a Visiting Associate Professor of Radiology at the Medical University of South Carolina.

### Sir Hugh Taylor, Chair, Guy's and St Thomas' and King's College Hospital NHS Foundation Trusts



Sir Hugh was appointed as Chair of Guy's and St Thomas' in February 2011. In February 2019, Hugh was also appointed Chair of King's College Hospital NHS Foundation Trust.

Hugh has had a long and distinguished career in the civil service which has included senior roles in the Department of Health and NHS Executive, the Cabinet Office and the Home Office. His most recent appointment before joining the Trust was as Permanent Secretary at the Department of Health, from which he retired in July 2010. Hugh was appointed Chair of the Board of Governors of the Health Foundation in 2017.

He was the former Chair of the National Skills Academy for Health and between 2011 and 2017 was a Trustee of Macmillan Cancer Support and the Nuffield Trust. Hugh is currently a Trustee of Cicely Saunders International.

@kingshealth

Impact

#KHP10Years

## Keynote speakers

### Rt Hon Professor Lord Kakkar, Chair of UCLPartners



Rt. Hon. Professor Lord Kakkar is Professor of Surgery at University College London, Chairman of University College London Partners Academic Health Science Partnership (UCL Partners) and Director of the Thrombosis Research Institute, London.

He completed his medical degree at King's College London and received his PhD from Imperial College London. His research interests include the prevention and treatment of venous and arterial thromboembolic disease and cancer-associated thrombosis.

Lord Kakkar was made a life peer in 2010 and sits on the cross benches of the House of Lords. He is a Chairman of the House of Lords Appointments Commission from 2013–2018. He is a member of Her Majesty's Most Honourable Privy Council and is Chairman of the Judicial Appointments Commission.

### Professor Yvonne Doyle CB, Regional Director, London, Public Health England

@doyle\_yg



Professor Yvonne Doyle joined Public Health England (PHE) in December 2012. Yvonne Doyle qualified as a doctor and has worked in senior roles in the NHS and Department of Health, and in the academic and independent sectors.

Since 2013 she has provided leadership for health, prevention of ill health, health protection and reduction of inequalities at city-wide level to the population of London. Her recent international work on behalf of the Mayor of London has been to accelerate London's ambition to become the healthiest and fairest global city. She has acted as an adviser to the WHO on Healthy Cities and has recently been appointed a Companion of the Order of the Bath for services to Public Health. As Regional Director for PHE London she ensures the quality, responsiveness and consistency of the services PHE centres provide. She also has an assurance role for emergency planning and response and is responsible for workforce development across the wider public health system.

@kingshealth

Impact

#KHP10Years

## 7 x 7 impact speakers

### Professor Sally Barrington

Sally Barrington is a Professor of PET imaging and a National Institute of Health Research (NIHR) Research Professor at King's College London.

### Professor Sir John Strang

John Strang is leader of the King's Health Partners Addictions Clinical Academic Group and Head of the Department of Addictions at King's College London.

### Professor Andrew Tutt

Andrew Tutt is Consultant Clinical Oncologist at Guy's and St Thomas' NHS Foundation Trust and Professor of Oncology at King's College London.

### Professor Lucy Chappell

Lucy Chappell is a Consultant Obstetrician at Guy's and St Thomas' NHS Foundation Trust and NIHR Research Professor in Obstetrics at King's College London.

### Professor Philip McGuire

Philip McGuire is Academic Director of the King's Health Partners Psychosis Clinical Academic Group and Professor of Psychiatry and Cognitive Neuroscience at King's College London.

### Professor Reza Razavi

Reza Razavi is Director of Research at King's Health Partners. He is also Professor of Paediatric Cardiovascular Science at King's College London and Guy's and St Thomas' NHS Foundation Trust.

### Professor Sir Robert Lechler

Robert Lechler is Executive Director at King's Health Partners and Senior Vice President (Health) at King's College London.

## Speakers



### Dr Valeria Modelli

@MondelliValeria

Valeria Modelli is a Senior Clinical Lecturer at the Institute of Psychiatry, Psychology & Neuroscience (IoPPN), King's College London and a Liaison Consultant Psychiatrist at King's College Hospital NHS Foundation Trust.

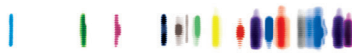
Valeria's research interest focuses on the field of Psychoneuroimmunology. The ultimate aim of her research is to advance our understanding of the interaction between the immune system and the central nervous system and to apply this knowledge to improve prevention and treatment strategies in patients suffering with psychiatric disorders. Among Valeria's most important research achievements: first, she has identified childhood trauma as one of the main causes of immune activation in patients with first episode psychosis and depression, second, she has shown that increased immune activation contributes to brain structure abnormalities which characterise patients with psychosis, third she has identified specific inflammatory and metabolic biomarkers as predictors of treatment response in patients with first episode psychosis and in patients with depression.

More recently Valeria has started leading the global mental health project IDEA (Identifying Depression Early in Adolescence) funded by mental health charity MQ, aiming to identify predictors of depression (including inflammatory markers) in adolescence across high and low-middle income countries. Dr Modelli has published more than 100 peer-reviewed scientific publications and has a h-index of 33.

@kingshealth

Impact

#KHP10Years



### Professor Leonie Taams

@Taams\_Lab

Leonie Taams is the Director of the Centre for Inflammation Biology and Cancer Immunology and Head of the Department of Inflammation Biology in the School of Immunology & Microbial Sciences at King's College London. She is a Professor of Immune Regulation and Inflammation.

Leonie runs an active research group aimed at identifying cellular and molecular mechanisms that initiate, perpetuate and regulate inflammation in human health and disease. Leonie has also held substantive teaching and education roles, including Deputy Director and Chair of the Assessment Sub Board of the MSc Immunology, module organiser and personal tutor.

In addition to her research and educational activities, Leonie holds several other roles including Editor-in-Chief of the journal *Clinical and Experimental Immunology*, and Director of the King's College London Federation of Clinical Immunology Societies Centre of Excellence. Previous roles include Congress Secretary of the British Society of Immunology.



### Professor Kenji Shibuya

Kenji Shibuya is currently Professor and Director of the Institute for Population Health at King's College London. His expertise ranges across important topics in health metrics and evaluation, health system performance, health financing with an emphasis on universal health coverage, product and system innovations, public-private partnerships, and R&D strategies. His global policy vision, with an emphasis on local ownership, performance, partnership and innovation, has become the core of the new global health strategy of the Japanese government.

Kenji has been an advisor to both central and local governments, and most recently was appointed as Special Advisor to the Director-General of the WHO on health metrics and data. He spearheaded the future strategic directions of the Japanese global health policy agenda after the Hokkaido Toyako G8 Summit in 2008. He led the Lancet Series on Japan, published in 2011 in an effort to jump-start debates on Japanese domestic and global health policy reform. In 2015, he chaired the landmark Advisory Panel on Health Care 2035 for the Minister of Health, Labour and Welfare.



### Professor David Edwards

David Edwards is Institute Director of King's Health Partners Women and Children's Health. He is also Professor of Paediatrics and Neonatal Medicine at King's College London, Head of the Department of Perinatal Imaging and Health, and Director of the King's College Centre for the Developing Brain. He was previously the Weston Professor of Neonatal Medicine, Head of the Neonatal Medicine Group at the Medical Research Council Clinical Sciences Centre, and Chairman and Head of the Division of Paediatrics, Obstetrics and Gynaecology at Imperial College London. In 2007, David was awarded the Arvo Yllopo Quinquennial Gold Medal and Prize for Research in Neonatal Medicine and appointed Senior Investigator in the National Institute of Health Research.

David holds current grant funding from the Medical Research Council, Engineering and Physical Sciences Research Council, Wellcome Trust and other bodies. He leads the Developing Human Connectome Project, a €15 million programme funded by the European Research Council to map the development of structural and functional connectivity in the fetal and newborn brain. David's published work is extensive, including papers in the *New England Journal of Medicine*, *Lancet*, and the *Proceedings of the National Academy of Sciences, USA*.

@kingshealth

Impact

#KHP10Years





### Professor Karen Edmond

Karen Edmond was appointed Chair of Child Health at King's College London and Evelina London Children's Hospital in May 2019. Karen previously held the roles of Chief of Health for United Nations Children's Fund (UNICEF, Afghanistan), an adjunct professorship at the University of Western Australia, and held positions in the WHO in Geneva and the London School of Hygiene & Tropical Medicine in Ghana.

During her time in these roles, Karen worked with the aim of tackling the challenges to newborn survival across the world, including improving neurodevelopment and nutritional outcomes. Her clinical and academic expertise in community medicine brings new opportunities to engage in a concerted way to drive improvements in both global and local child health.



### Professor John Moxham

John Moxham is Director of Value Based Healthcare at King's Health Partners. He originally joined King's Health Partners in 2009 as Director of Clinical Strategy and was Medical Director of King's College Hospital NHS Foundation Trust from 2003 to 2009. John works to increase the integration of services across King's Health Partners and also promote the integration of tertiary and secondary services with those in community, primary, and social care with the aim of increasing value across the health and social care system. John undertook his medical training at University College London, qualifying in 1973. His clinical training in general and respiratory medicine included positions at University College Hospital, Hammersmith Hospital and Brompton Hospital. In 1982 he was appointed to King's College Hospital NHS Foundation Trust as a Consultant in Respiratory Medicine and in 1990 John became a Professor of Respiratory Medicine at King's College London.

John has a longstanding interest in public health, particularly in smoking reduction and for many years was the Chairman of Action on Smoking and Health. His major current interests related to healthcare improvements include: advancing value based healthcare – a central theme of the King's Health Partners, engaging patients in pathway development and the use of informatics to capture patient reported outcomes relevant to specific pathways, and capturing outcomes. He believes that capturing outcomes and value in the King's Health Partners Clinical Academic Group Outcomes Books and scorecards is of critical importance.

For almost 40 years he and his family have lived locally to King's College Hospital NHS Foundation Trust in Camberwell, and are enthusiastic 'Camberwellians'.

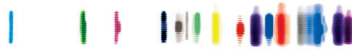
@kingshealth

Impact

#KHP10Years







## Enjoying the conference? Let us know and wish us a Happy Birthday!

Twitter: @kingshealth #KHP10Years

LinkedIn: King's Health Partners



---

For more information:  
King's Health Partners,  
Ground Floor, Counting House  
Guy's Hospital  
London SE1 9RT



0207 188 2892



kingshealthpartners@kcl.ac.uk



kingshealthpartners.org



King's Health Partners



@kingshealth

@kingshealth

Impact

#KHP10Years