

# World Cancer Day 2019

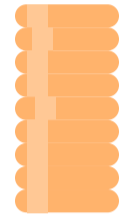
## #IAmAndIWill

We are King's Health Partners Comprehensive Cancer Centre.

We will continue to bring together world-class clinical services, research and education for the benefit of people with cancer in south east London and beyond.



### In the UK



**360,000**

**4 in 10**

**£5 billion**

new cases of cancer are diagnosed each year.

cancers are preventable.

is spent every year by the NHS to treat cancer.

### Caring for patients

In 2018, our partner acute trusts – Guy's and St Thomas' and King's College Hospital NHS Foundation Trusts, plus Lewisham and Greenwich NHS Foundation Trust...

treated

**8,200**

new cancers.

cared for more than

**23,000**

people with cancer.

had a total of

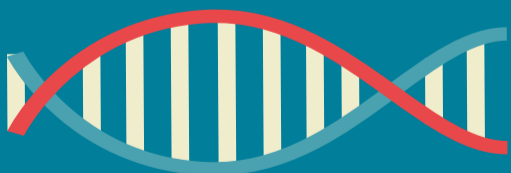
**157,700**

visits from cancer patients.

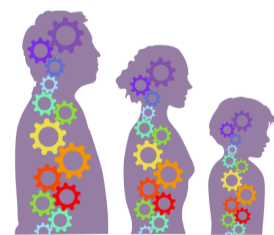


### Revolutionising cancer treatment

We're transforming cancer care by...



working together on ground-breaking research and improving patient pathways.



incorporating mind and body care to support the mental health of cancer survivors and their families.



listening to patients - the £160 million Guy's Cancer Centre was designed by patients for patients.



being part of the world-leading Cancer Research UK City of London Centre.