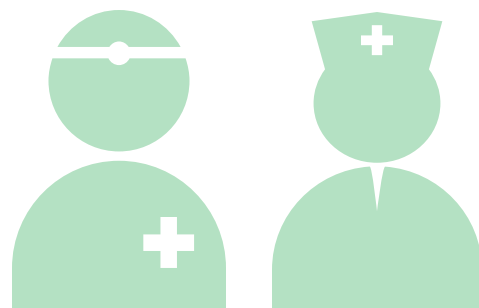


Alcohol Care Team


One year on...

A cross-partner team working at King's College Hospital is reducing alcohol-related admissions to A&E by assessing and identifying the best treatment options.



91% of alcohol-related referrals from the Emergency Department of the hospital are seen

within 1 hour 

98% of alcohol-related referrals from the hospital ward are seen 

within 24 hours

Alcohol-related admissions

have reduced by **2.6 days** 

from **6.3 days** to **3.7 days** since the Alcohol Care Team started, freeing up time for staff to support more patients.

This equates to a potential annual saving of:

£536,000 

The team has diverted

50% of all alcohol-related visits to A&E to other sources of support

equating to



2,000 beds freed up

in the hospital since October 2018 for patients who need them most.

" The team have worked very hard over the last year and we have seen a huge increase in patient referrals. This has enabled us to make sure patients are treated in the right place, improved patient care and had a positive impact on hospital resources "

- Joshua Stapleton

Mental Health Nurse and Clinical Lead of the King's Health Partners Alcohol Care Team